

# MY CHOICE, HOME PERITONEAL DIALYSIS (PD)

## Myths

vs.

## Reality



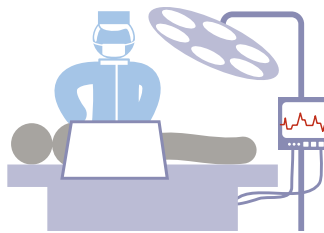
You'll get an infection!

Peritonitis (an infection of the abdomen) can be prevented. It rarely occurs in good peritoneal dialysis (PD) clinics (about once every seven years). An infection from an hemodialysis access is more common and more likely to be fatal.



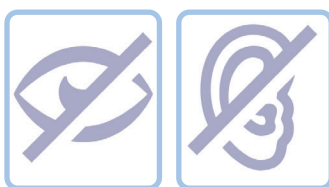
You'll have to get rid of your pets to do PD at home.

Lots of people do PD at home and still have pets. Clean well, and keep pets out of the room when you connect and disconnect.



If you've had previous abdominal surgery, you can't do PD.

Routine abdominal surgeries (like hernia repairs, C-sections, and some transplants) do not prevent you from doing PD.



If you have vision or hearing problems you can't do PD.

There are assist devices available to help with most tasks involved with doing PD.



You need to have some kidney function in order to do PD.

Kidney function will always be checked, but PD can be done without any kidney function.



If you are overweight, you can't do PD.

PD can still be done. The surgeon will evaluate the best placement of the catheter based on your shape and size.



Better healthcare,  
realized.

Adapted from Northwest Renal Network (Network 16) and Heartland Kidney Network (Network 12).

This material was prepared by IPRO End-Stage Renal Disease Network of New England, under contract with the Centers for Medicare & Medicaid Services (CMS), an agency of the U.S. Department of Health and Human Services. The contents presented do not necessarily reflect CMS policy. CMS Contract Number: HHSM-500-2013-NW001C

# MY CHOICE, HOME PERITONEAL DIALYSIS (PD)

## Myths

vs.

## Reality



You can't do PD if you are noncompliant in your dialysis center.

Each individual will be evaluated, but people with a high need to control situations may actually do better at home.



You need to have a lot of space at home to do PD.

You do need some space for PD supplies, but many people who live in efficiency apartments, trailers, and other small spaces find a way to make PD work.



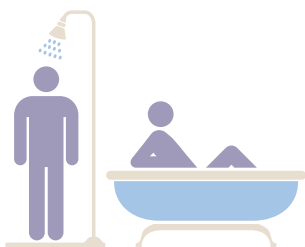
There is only one kind of PD.

PD involves having a special fluid in your abdomen, but there are some choices in how to handle the process, like manually or automated (while you sleep).



When you do PD, you can eat and drink whatever you want.

There are still limitations on your diet and fluid intake, but you have more choices. Your dietitian will guide you.



When you do PD, you will be free to take either a bath or a shower.

A bath is not allowed unless you have a pre-sternal catheter placement. Showers are allowed. You will be taught how to care for your catheter site after a shower.



To file a grievance, please contact us:

IPRO End-Stage Renal Disease Network of New England

1952 Whitney Avenue, 2nd Floor, Hamden, CT 06517

Main: (203) 387-9332 • Patient Toll-Free: (866) 286-3773

Fax: (203) 389-9902 • E-mail: [info@nw1.esrd.net](mailto:info@nw1.esrd.net)

Web: [network1.esrd.ipro.org](http://network1.esrd.ipro.org)